

# LIGHTING THE HEATER

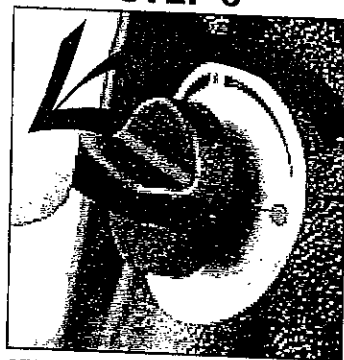
**STEP 1** TURN ON GAS SUPPLY FROM GAS / PROPANE CYLINDER

**STEP 2**



**POSITION FLAME**  
Hold flame under burner head (bi) as indicated above.

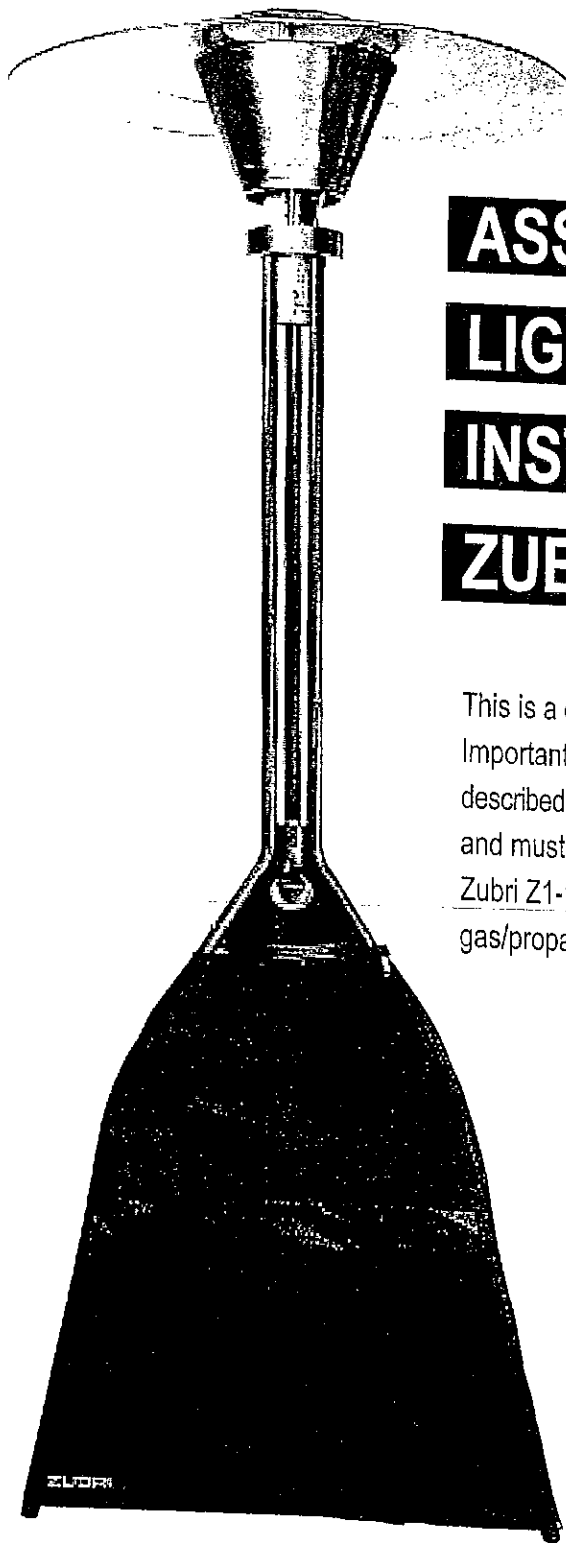
**STEP 3**



**START GAS FLOW**  
Push in control knob and turn anti-clockwise.

## ASSEMBLY AND LIGHTING INSTRUCTIONS ZUBRI Z1-12

This is a quick guide.  
Important safety precautions are described in the Zubri SAFETY GUIDE and must be read before using the Zubri Z1-12 patio heater or handling gas/propane cylinders.



PHONE TOLL FREE:  
**1-800-779-3267**  
FOR ASSISTANCE

**GAS WILL IGNITE**

**IMPORTANT: KEEP CONTROL KNOB PUSHED IN FOR AT LEAST 15 SECONDS.**

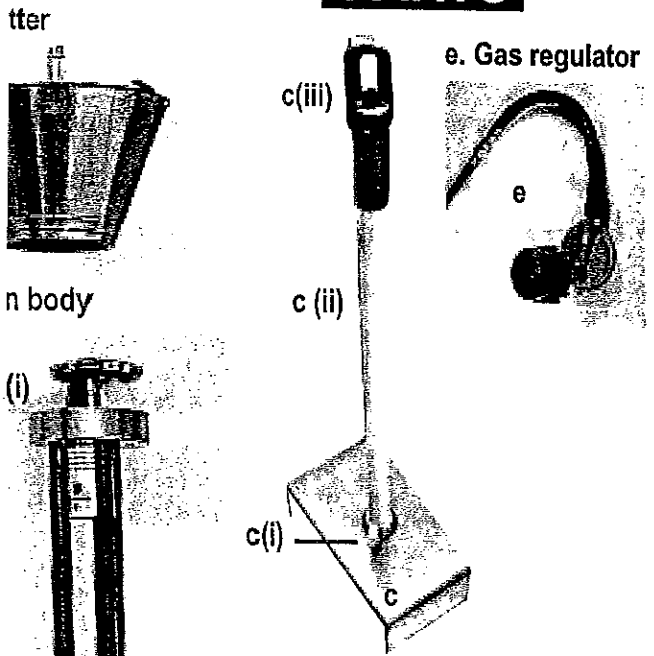
This will allow the safety thermo couple device to heat up. If the thermocouple is not heated correctly the gas supply will automatically cut off.

NB: If flame goes out for any reason wait 2 minutes and repeat step 2 + 3.

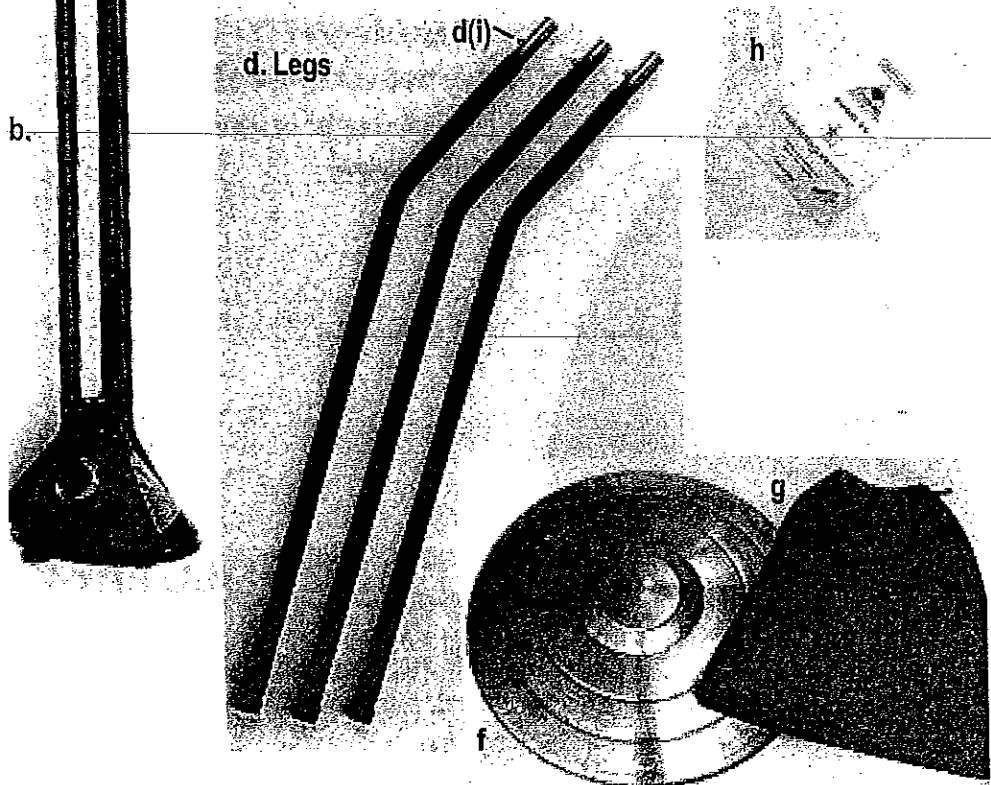
**TO ADJUST HEAT** – Push in control knob and turn anti-clockwise to increase heat or clockwise to reduce heat.

**TURN HEATER OFF + MAKE SAFE** By pushing in control knob and turning clockwise until stop. Flame will go out. **TURN OFF** gas supply on gas/propane cylinder.

# PARTS



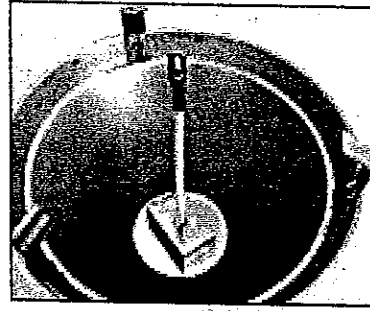
- a. Emitter
- b. Main body
  - b(i) Burner head
  - b(ii) Control cone
- c. U bracket
  - c(i) wing nut
  - c(ii) threaded rod
  - c(iii) folding wing nut (attached)
- d. Legs
  - d(i) clutch spring
- e. Gas regulator
- f. Reflector
- g. Skirt
- h. Safety guide



# ASSEMBLY

REMOVE ALL PARTS FROM BOX OR CARRY CASE

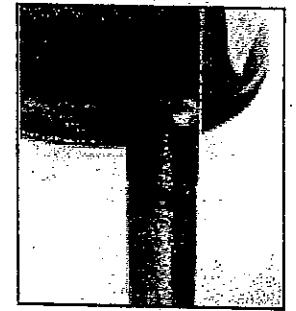
## STEP 1



**NB:** This step is not necessary if the heater is supplied in a carry case.  
**ATTACH EMITTER TO BURNER HEAD**  
 Stand body (b) upright. Place emitter (a) on burner head b(i).

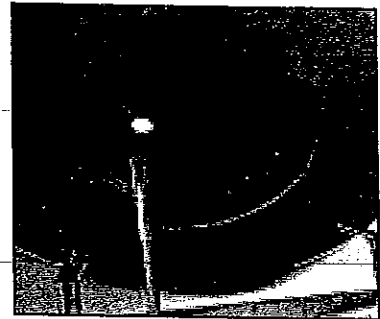
Place "u" bracket (c) inside emitter (a). Insert threaded rod c(ii) through hole in "u" bracket (c) and screw into hole in top of burner head b(i). Secure U bracket onto burner head by tightening wing nut c(i) onto "u" bracket (c) until hand tight and emitter (a) is attached firmly to burner head b(i).

## STEP 2



**ATTACH LEGS TO CONTROL CONE**  
 Depress clutch spring d(i) on leg (d) and slide leg into leg holder on control cone b(ii). **NB:** make sure clutch spring d(i) locks into hole in leg holder.

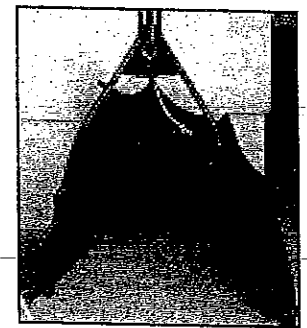
## STEP 3



**ATTACH REFLECTOR**  
 Place centre hole of reflector (f) over folding wing nut c(iii) and slide reflector onto emitter (a). Unfold the folding wing nut c(iii) and

screw down onto the reflector (f) until reflector is held firmly onto emitter.  
**OVER TIGHTENING THE FOLDING WING NUT CAN DAMAGE THE REFLECTOR.**

## STEP 4



**ATTACH SKIRT**  
 Wrap skirt around legs. Secure with velcro at top. Zip up. Move skirt so that zip runs down one of the legs.

# CONNECTING THE GAS / PROPANE CYLINDER



**HANG GAS / PROPANE CYLINDER**  
 Lift gas / propane cylinder onto hook so cylinder is suspended.  
**WARNING:** Cylinders are heavy & may cause injury.  
**IMPORTANT:** Cylinder adds important weight to the Zubri heater and helps to keep it stable.

Fix gas regulator to cylinder. Make sure regulator is securely fitted.