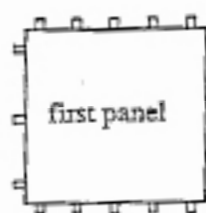




Laying Instructions

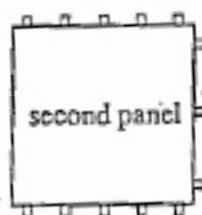
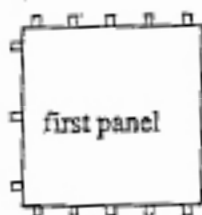


Row 1:

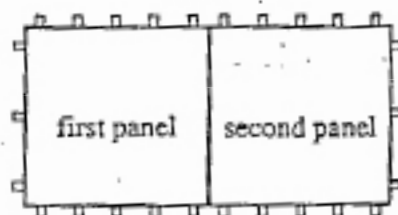
Start at the top left hand corner position by placing a full panel with the 3 'end' lugs pointing to the left,

Then fit a second panel with the 3 end lugs pointing to the right;

end lugs



end lugs



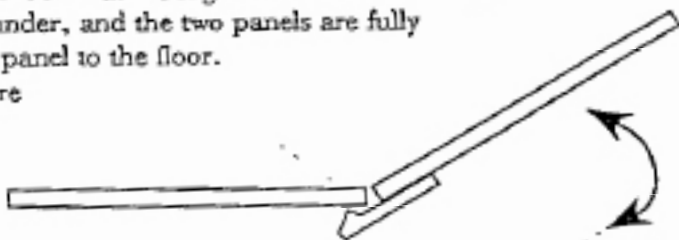
Continue to lay the row with as many full panels as required for the size of the floor, all with the 3 end lugs pointing right. Make sure that the panels are flush along the whole length of the row to ensure the edging will be straight.

To fit the panels:

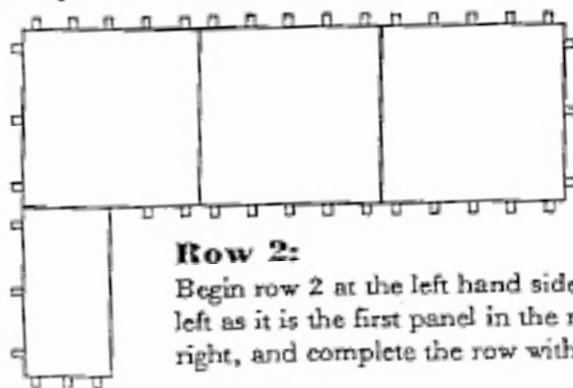
hold the panel at an angle as shown and push it so that the lugs slide underneath the panels already laid. When the lugs are fully under, and the two panels are fully touching all along their edges, then lower the panel to the floor.

If the panels are not square, or if the edges are not touching all along the panel being fitted will not lower.

Do not force the panel down, simply adjust it until it lowers.



It may be helpful to have someone hold the panels of the first row whilst fitting the second row, to stop them slipping on a smooth or carpeted surface, or alternatively, lay the first row and then fit the edging to hold the panels whilst the second row is added.



completed row of
three panels = 9ft floor

Row 2:

Begin row 2 at the left hand side with a half panel, again with the 3 end lugs pointing left as it is the first panel in the row. Then fit full panels with the 3 end lugs all pointing right, and complete the row with another half panel.

EDGING:

Start to lay the edging when row two is completed. The edging then acts as a "straight edge" and ensures each row is square and flush as it is laid.

Fit the edging by pushing the hugs underneath the panels at an angle, and then lower to the floor, in the same manner as when laying the panels, do not force them down.

Half length and full length edges are supplied so that the panel joints and the edging joints never coincide, ie they follow the same overlapping brickwork pattern. Nb; The corners are always positioned on the sides of the floor as shown below and never on the top (ie of row 1)

Row 3:

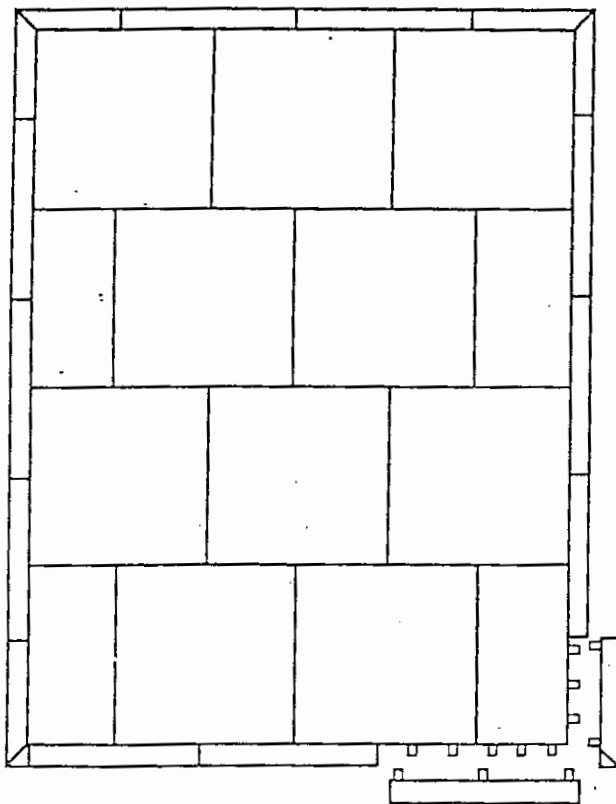
Lay with full panels as row one.

Row 4:

Start and finish with half panels as row two.

Continue alternating rows and fitting edges as above until the floor is laid.

- PLEASE NOTE:**
- 1) Never move trolley without the removable top bar fitted.
 - 2) The flooring, being made from natural wood, should be stored in a well ventilated atmosphere, and never in a hot, dry place.
 - 3) Avoid excessive exposure to moisture.



Example of a
9ft by 12ft floor

two corner pieces always on the
same edge and always positioned on
the ends of the row.